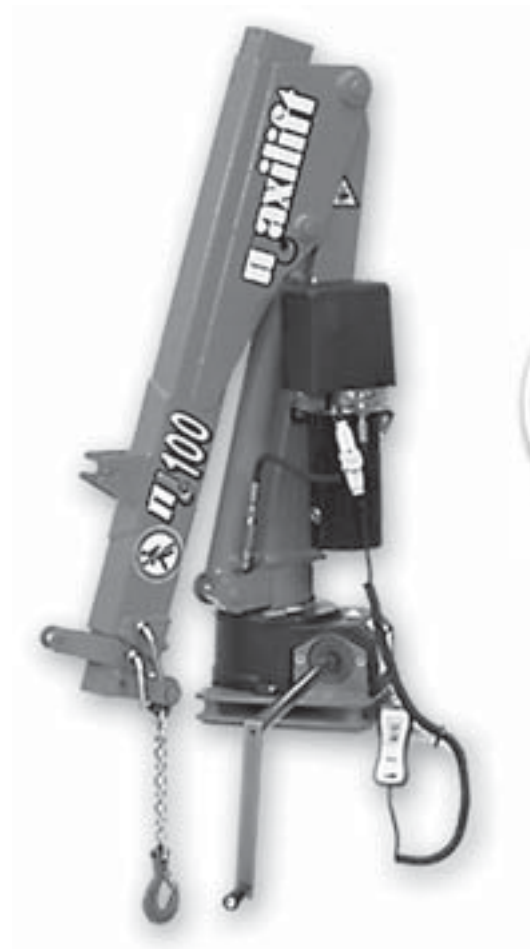


# maxilift

## TECHNICAL SHEET



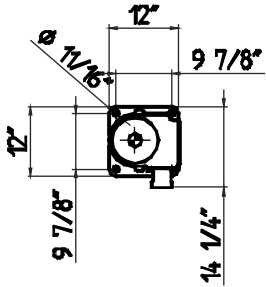
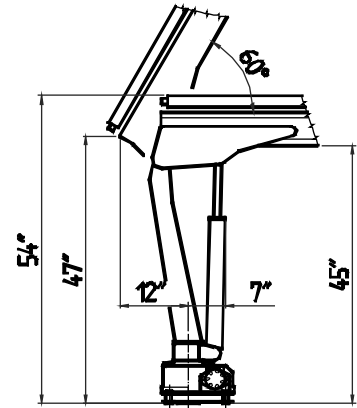
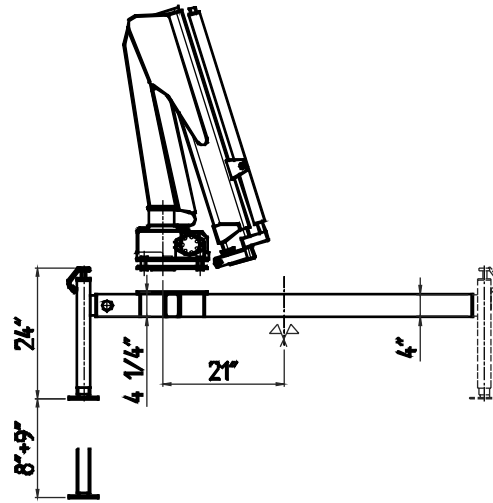
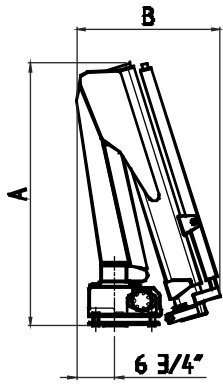
# 100



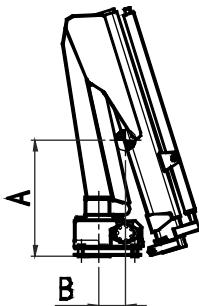
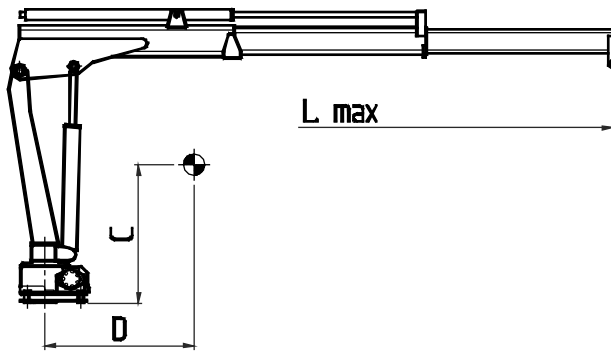
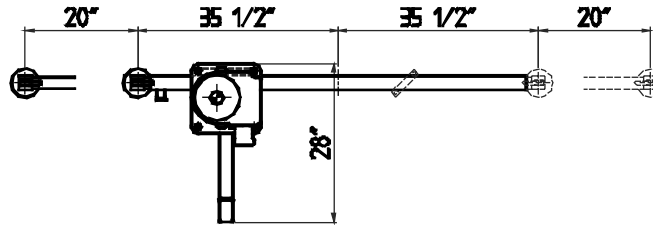
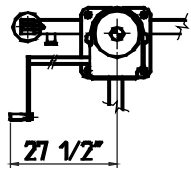
**Next Hydraulics**



DIMENSIONS		
CRANE	A	B
100	47"	25"



VERS. "M" - "E" - "ES"



CRANE	A	B	C	D	L max
100	16"	4 3/4"	27 1/2"	13 3/4"	106"

**TECHNICAL DATA**

TYPE	VERSION					
	100	100 M	100 E	100 ES	100 ERS	100 H
CRANE RATING	ft. lbs. 7,400					
STANDARD EXTENSIONS Nr (HYDRAULICS - MANUALS)	n°	2M	2M	1H+1M	1H+1M	1H+1M
STANDARD OUTREACH	ft. 8' 10"					
SLEWING ANGLE	° 330°					
MAXIMUM ANGLE SLOPE	° 5°					
SLEWING TORQUE	ft. lbs. 1,000					
MAX. LIFTING HEIGHT FROM CRANE BASE	ft. 11' 6"					
SUGGESTED OIL FLOW	gpm. 1 - 1.6					
MAX. WORKING PRESSURE	psi. 2,600					
BASIC CRANE WEIGHT	lbs.	190	200	250	260	230
BASE WEIGHT WITH EXTENDABLE STABILIZERS	lbs. 100					
BEAM WEIGHT WITH 2 EXTENDABLE STABILIZERS	lbs. 55					
MOTOR ABSORPTION FOR ELECTROHYDR. CRANE 12V	A min/max	-	30/100	70/120	70/120	-
MOTOR ABSORPTION FOR ELECTROHYDR. CRANE 24V	A min/max	-	15/45	35/60	35/60	-

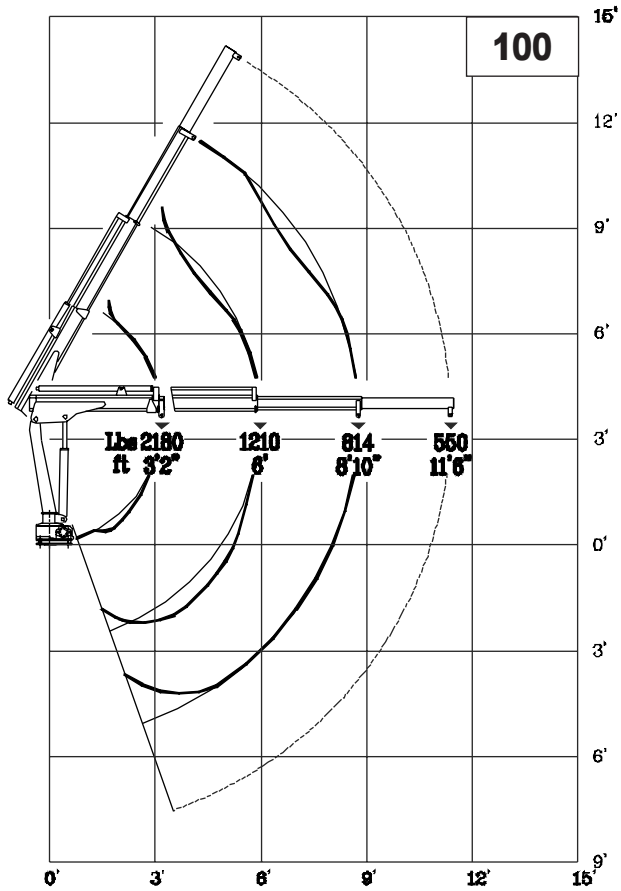
VERSION	DESCRIPTION
"M"	MECHANICAL
"E"	ELECTROHYDRAULIC (ONLY LIFTING)
"ES"	ELECTROHYDRAULIC (LIFTING AND EXTENSION)
"ERS"	ELECTROHYDRAULIC
"H"	HYDRAULIC (PTO)

**OPERATING TIMES**

VERSION	SLEWING (rpm)	LIFTING (sec)		LOWERING (sec)	EXTENSION OUT (sec)	EXTENSION IN (sec)
		Pmin	Pmax			
<b>100 "E" 12/24V</b>	-	30	35	18	-	-
<b>100 "ES" 12/24V</b>	-	20	25	18	12	9
<b>100 "ERS" 12/24V</b>	1.8	20	23	18	12	9
<b>100 "H" (P.T.O)</b>	2.0	18		18	10	9

Pmax: max. working pressure  
Pmin: min. working pressure

Lifting class **H2-B3**  
DIN 15018



# maxilift

by

## Next Hydraulics



Via Mediterraneo n°6, 42022 Boretto (R.E.) Italy  
Tel.: 0522-963008, Fax: 0522-963039  
<http://www.maxiliftcrane.com> E-mail: [nexthdraulics@tin.it](mailto:nexthdraulics@tin.it)