

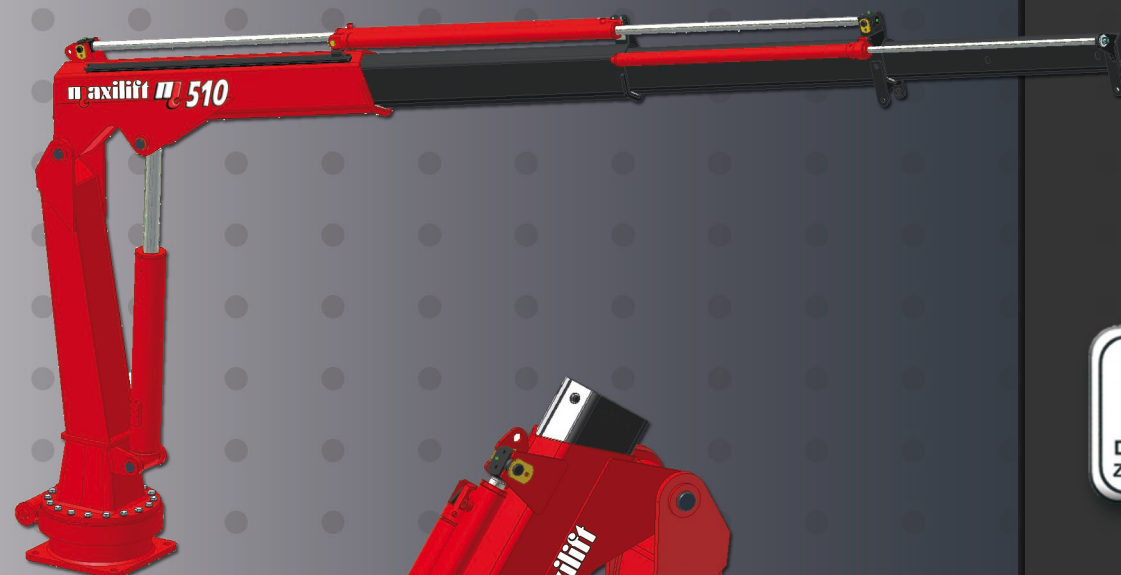


maxilift 510

maxilift



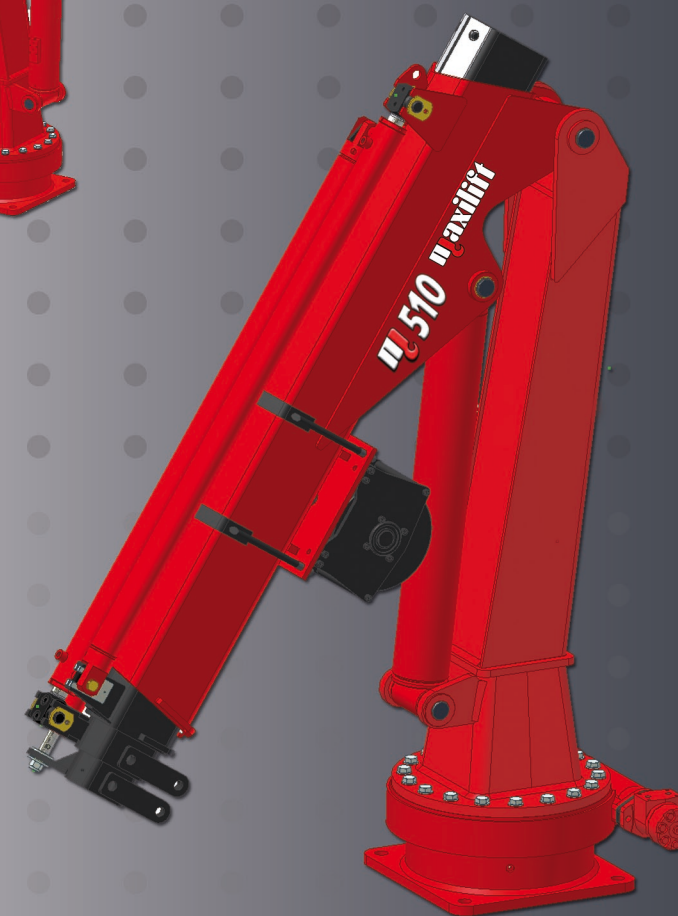
DATI TECNICI - TECHNICAL DATA		VERSIONE - VERSION				
MODELLO - TYPE	510	510.2C	510.3C	510.2L	510.3L	
CAPACITA' DI SOLLEVAMENTO CRANE RATING	kNm ft. lbs	48 35,300				
N° SFILATE STANDARD (IDRAULICHE) STANDARD EXTENSIONS Nr (HYDRAULICS)	N°	2	3	2	3	
SBRACCIO STANDARD STANDARD OUTREACH	m ft.	3.65 12'	4.70 15' 5"	4.40 14' 5"	5.75 18' 10"	
ANGOLO DI ROTAZIONE SLEWING ANGLE	°	330°				
INCLINAZIONE MASSIMA MAXIMUM ANGLE SLOPE	°	5°				
COPIA DI ROTAZIONE SLEWING TORQUE	kNm ft. lbs	8 5,900				
ALTEZZA SOLLEVAMENTO MAX. DALLA BASE MAX. LIFTING HEIGHT FROM CRANE BASE	m ft.	5.25 17' 3"	6.25 20' 6"	5.95 19' 6"	7.24 23' 9"	
PORTATA CONSIGLIATA SUGGESTED OIL FLOW	l/min g pm	15 - 18 56 - 67				
PRESSIONE MAX. DI ESERCIZIO MAX. WORKING PRESSURE	bar psi	230 3300				
PESO GRU BASE BASIC CRANE WEIGHT	kg lbs	440 970	480 1050	460 1000	515 1100	



DIN EN ISO 9001:2000
Zertifikat: 01 100 044739



SPECIFICHE ARGANO - WINCH SPECIFICATIONS	U.M.	
ARGANO TIRO DIRETTO MAX. (3°STRATO) MAX. WINCH SINGLE LINE CAPACITY (3 rd LAYER)	kg lbs	990 ("CE") - 1000 (EXTRA "CE") 2200
VELOCITA' SALITA FUNE (3°STRATO) ROPE RAISING SPEED (3 rd LAYER)	m/min ft./min	15 56'
VELOCITA' DISCESA FUNE (3°STRATO) ROPE LOWERING SPEED (3 rd LAYER)	m/min ft./min	20 66'
DIAMETRO FUNE ROPE DIAMETER	mm in	8 5/16"
LUNGHEZZA FUNE ROPE LENGTH	m ft.	30 98'
PESO KIT ARGANO WINCH KIT WEIGHT	kg lbs	75 165



maxilift 510

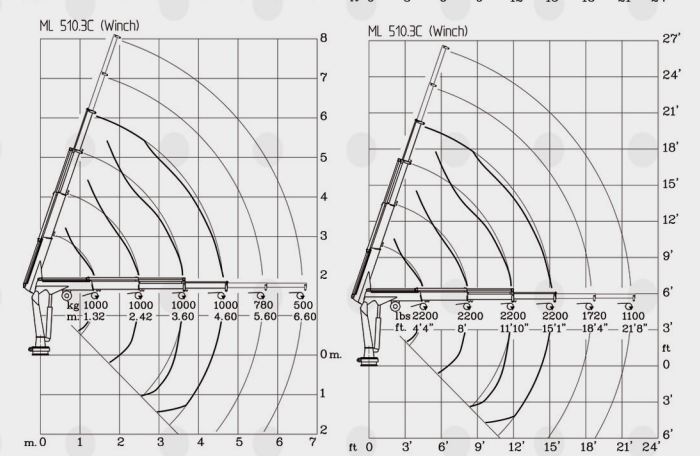
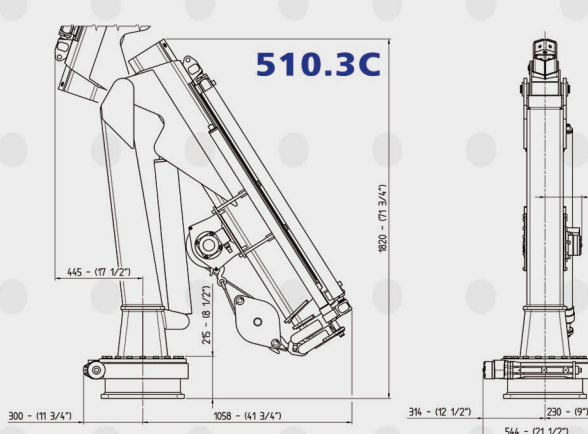
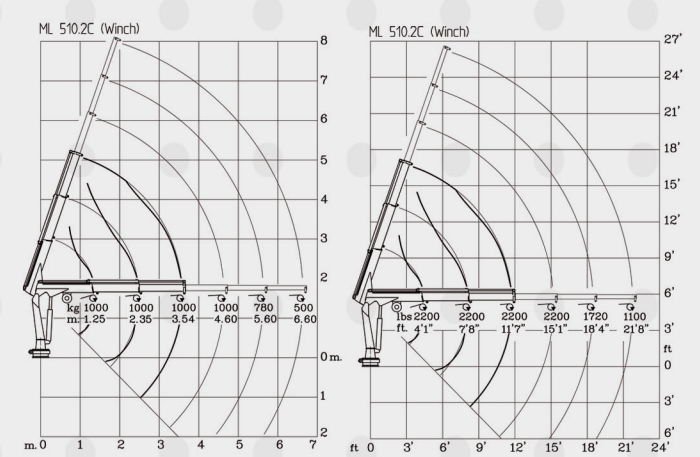
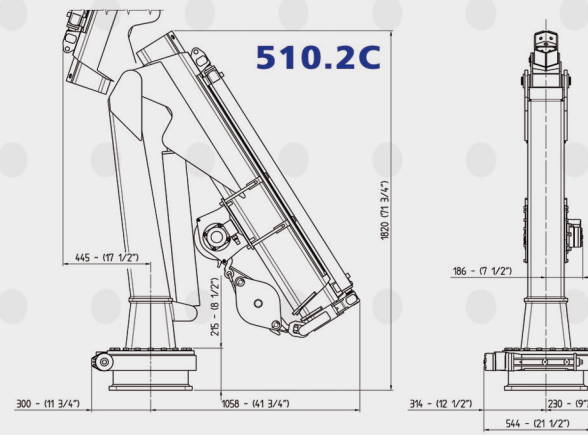
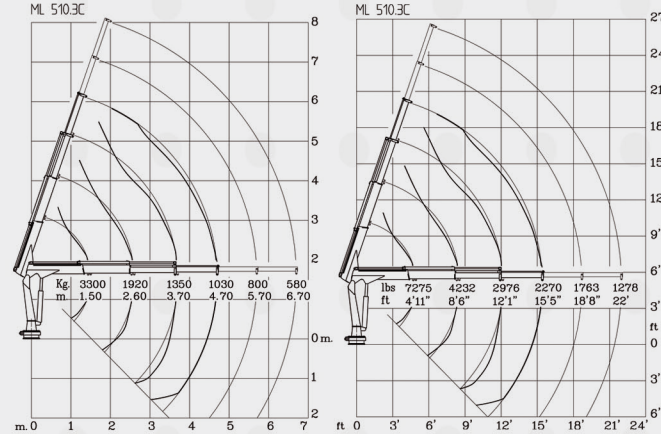
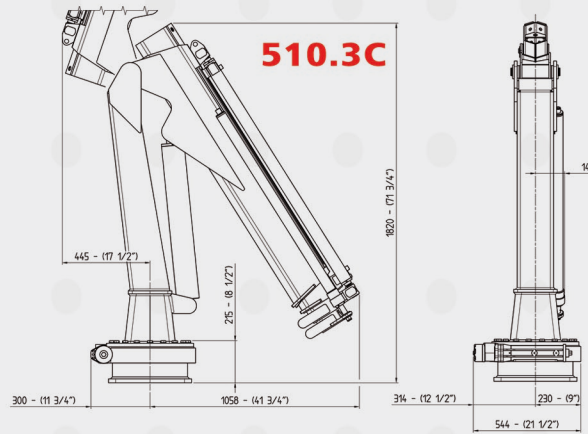
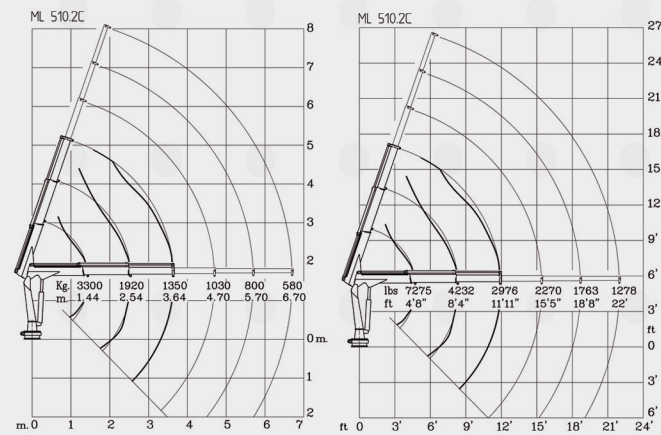
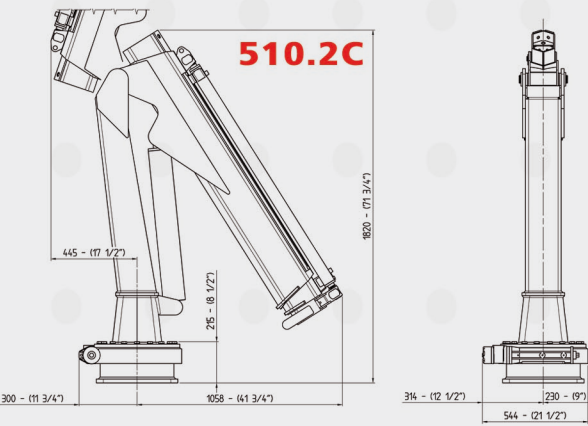


Next Hydraulics

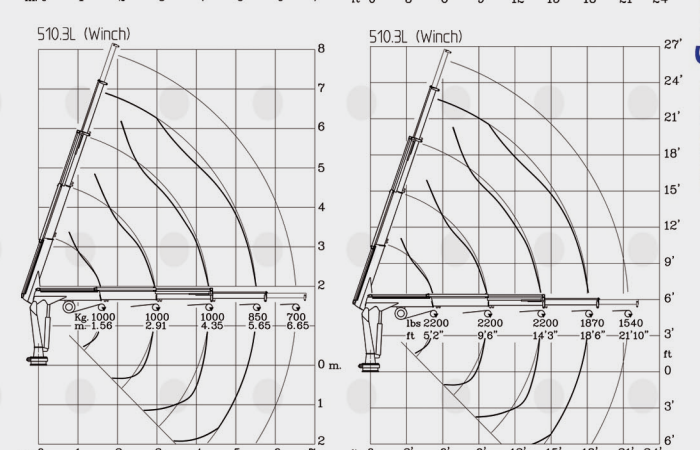
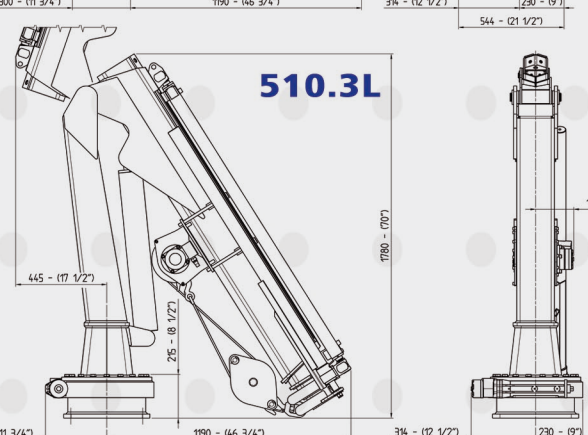
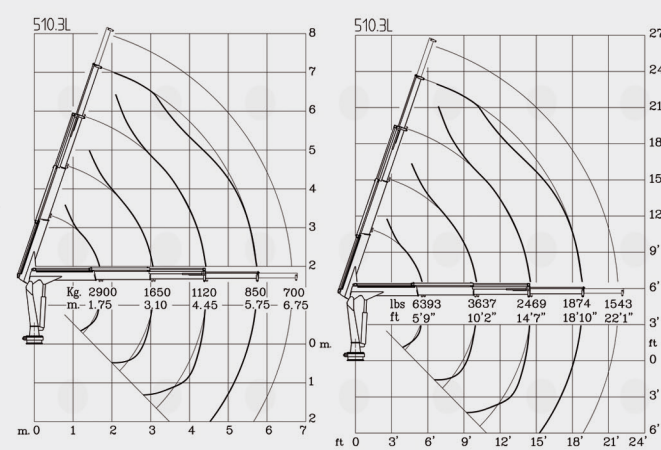
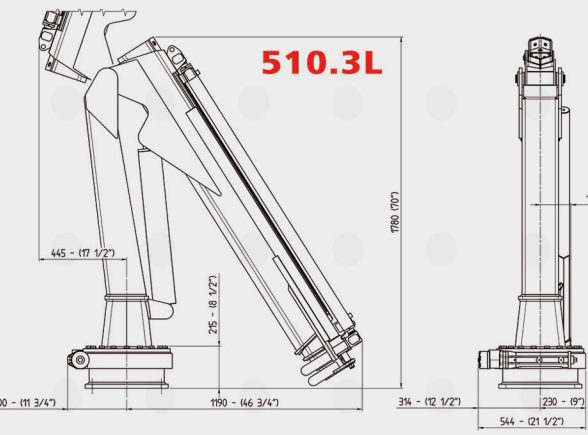
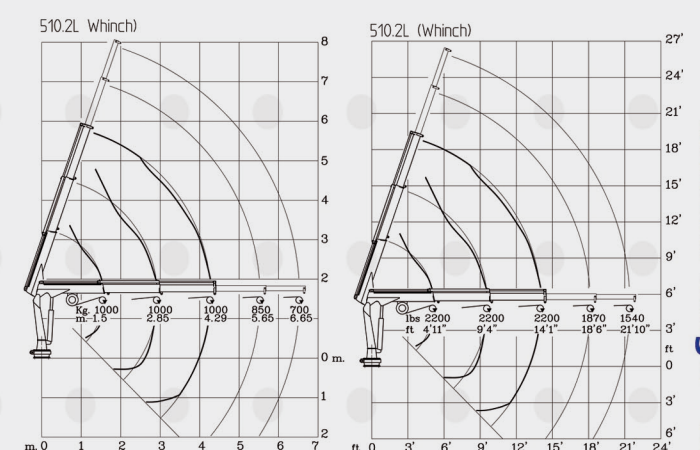
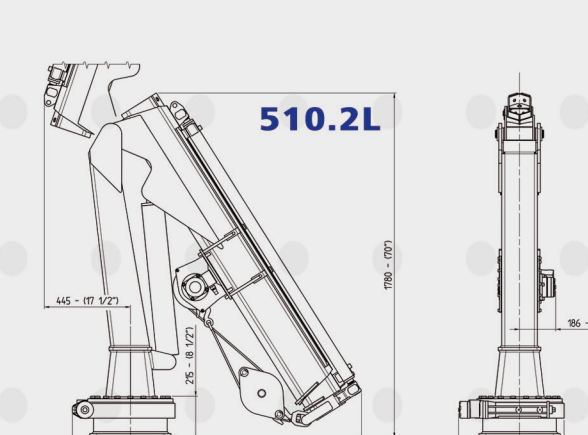
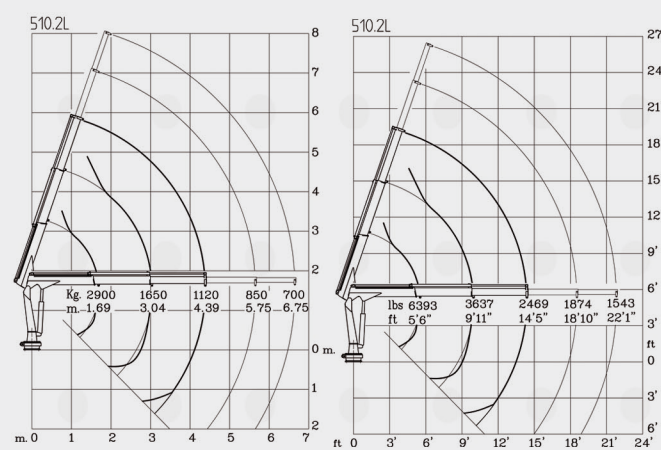
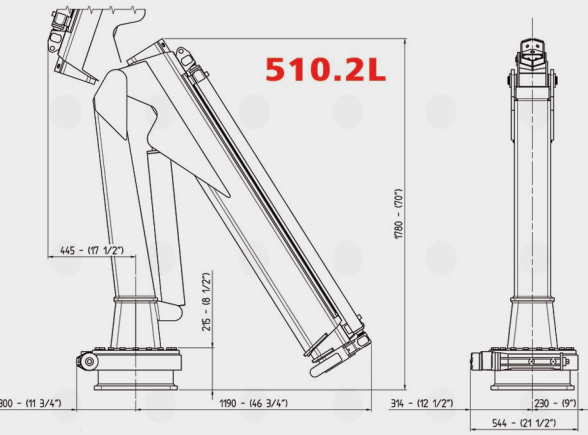
Via Mediterraneo n.6 - 42022 BORETTO (RE)
ITALY - tel. +39.0522.963008 fax. +39.0522.963039
e-mail: info@maxiliftcrane.com

www.maxiliftcrane.com

Braccio corto - Short boom



Braccio lungo - Long boom



Braccio corto - Short boom

Braccio lungo - Long boom

