

Standard Features:

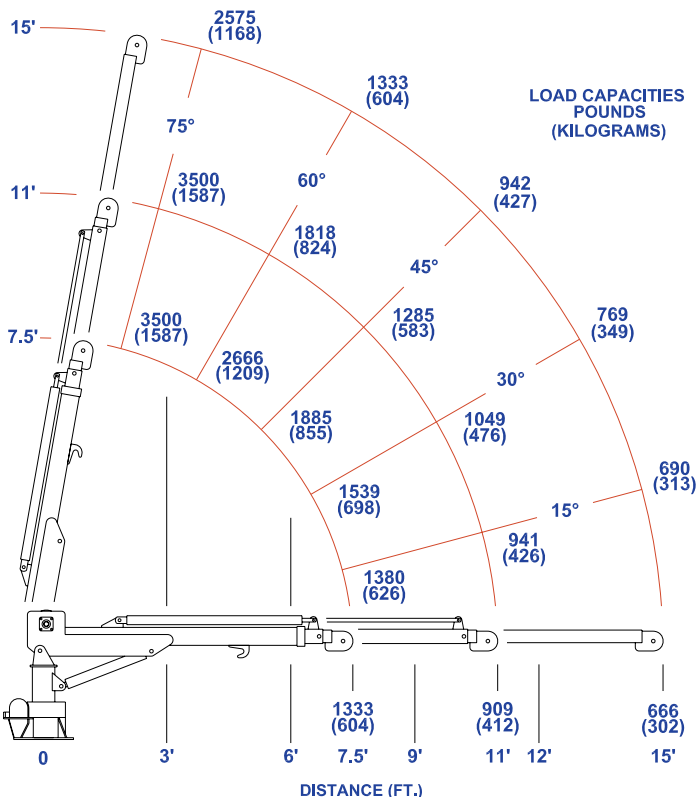
- 10,000 ft/lb Rating
- 3,500 lbs. lift @ 2.5 ft
- 15 ft of Reach w/ Manual Jib
- Powder Coated Components
- Full Function Detachable Remote

Electric

3
5
1
0
E



MODEL 3510E



* MAXIMUM SINGLE LINE CAPACITY IS 1750 IN THESE OPERATING POSITIONS.

TIGER Model 3510 Specifications

Crane Rating:	10,000 ft/lbs
Maximum Reach:	15 ft from CL
Extension:	11' -15' Manual Boom Extension
Maximum Height:	16 ft from base of crane
Maximum Lift:	1750lbs single part line 3500lbs double part line
Boom Elevation:	-5 to +75 degrees
Cable:	1" x 50' Aircraft winch cable
Winch Type:	Hydraulic
Winch Speed:	20ft/min
Rotation:	360 limited continuous
Control:	Detachable Remote, 25 ft of Control Cable
Stowed Height:	36"
Weight:	890lbs
Mounting Space:	16 5/8" x 16 5/8"
Battery Req'd:	700 Cold Crank Amps With 200 minute Reserve minimum Requirement

Min GVW Req'd: 11,000 lbs