

Standard Features:

- 30,000 ft/lbs rating
- 5000 lbs lift @ 6 ft
- 21 ft of hydraulic reach
- Hex boom Construction
- Planetary Winch
- Worm Drive Rotation
- Crane Operation Light Bar
- Powder Coated Components

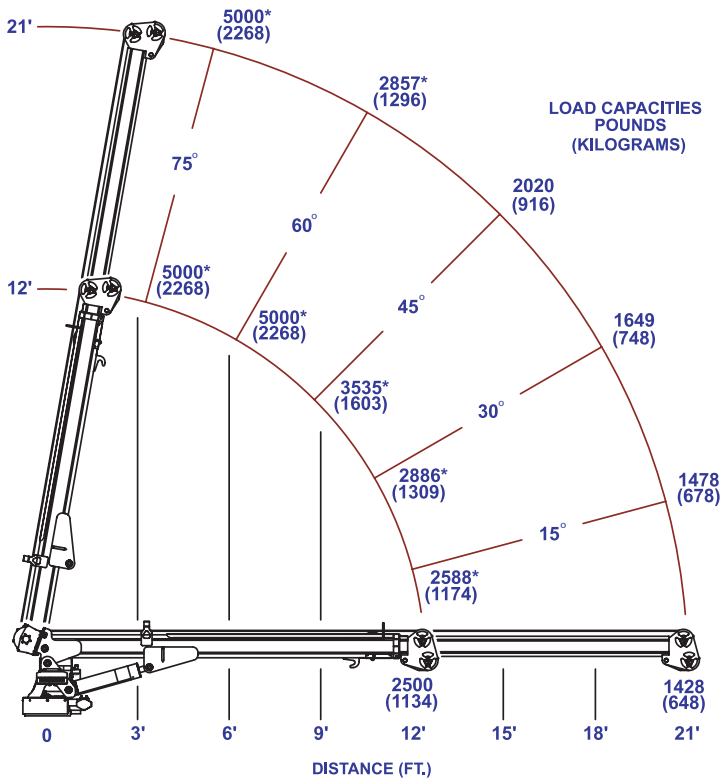
Hydraulic



5
0
3
1



MODEL 5031



* MAXIMUM SINGLE LINE CAPACITY IS 2500 LBS (1135kg) IN THESE OPERATING POSITIONS

TIGER Model 5031 Specifications

Crane Rating:	30,000 ft/lbs
Maximum Reach:	21 ft from CL
Extension:	Single hyd from 12 to 21 ft
Maximum Height:	22.5 ft from base of crane
Maximum Lift:	2500 lbs single part line 5000 lbs double part line
Boom Elevation:	-5 to +75 degrees
Cable:	5/16" x 120' Galvanized
Winch Type:	Hydraulic Planetary - 5031
Winch Speed:	70 ft/min* Hydraulic - 5031
Rotation:	400 degrees with double reduction (worm & pinion)
Control:	Wireless proportional with 33 ft Tether cord - 5031
Stowed Height:	36"
Weight:	1380 lbs 5031 (crane only)
Mounting Space:	22" x 30"
Valves:	12 VDC D03 12 GPM - 5031
Filter:	9 Micron Absolute - 5031
Pump Req'd:	8 GPM @ 2700 PSI - 5031
Min GVW Req'd:	14,500 lbs

*Speeds represented are with recommended pump and at normal speed.