

Stellar Cranes



Our newest 4420 crane is the perfect service truck accessory for public utilities, municipalities, water works, and many other situations needing lifting. The 4420 features a 16,000 foot pound (2.23 ton-meters) capacity and can lift a maximum of 4,000 pounds (1,814 kg) at four feet (1.22 m). Stellar Industries is the only U.S. manufacturer in this class of crane to offer several unique features as standard equipment. These include the 20 foot pendant remote control, a planetary winch with 25 feet per minute winch speed, hexboom construction and hydraulic extensions to 15 feet of reach, manual to 20 feet.



Hexagonal Boom Construction

The heavy duty hexagonal boom construction on all Stellar cranes provides a stronger cross section than square tubing. This design reduces boom flex and side to side movement.

The Speed You Need

Increased winch speed has been the most common request from the field. Stellar has incorporated a planetary winch system with speeds to 25 ft./min., giving you increased speed over the competition. Since it's a planetary winch, you get the security of mechanical and hydraulic brakes.

Stellar 4420	Winch Speed Comparison <small>*single part line</small>	Competitor "Z"
25 Feet / Min.		17 Feet / Min.
	Competitor "Y"	
	20 Feet / Min.	

Designed & Manufactured in the USA

4420 Telescopic Crane

Stellar Cranes

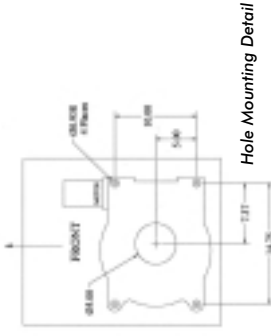
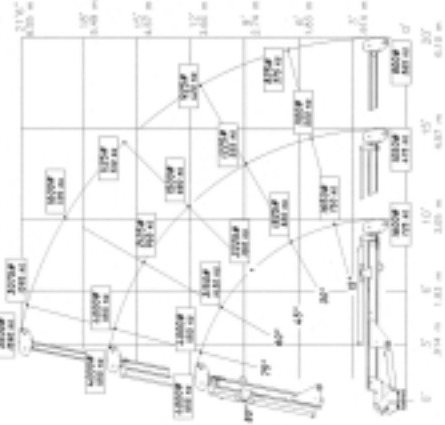
Designed With You In Mind

Stellar's design team used months of input from crane users throughout North America. This information helped the Stellar designers make the 4420 telescopic crane outshine all other cranes in its class with its above standard features.

The features designed into the 4420 allow the user to do their job quicker, more efficient, and easier than any competitive product. At Stellar Industries, we are committed to making you work more productively.



4420 Capacity Chart



Hole Mounting Detail

Model 4420 Crane SPECIFICATION SHEET

Crane Rating:	16,000 ft.-lbs (2.23 ton-meters)
Standard Boom Length:	10' (3.05 m) from CL of Crane
Boom Extension:	Hydraulic 60" (152.4 cm) 1st stage: Manual 60" (152.4 cm) 2nd stage:
Max. Horizontal Reach:	20' (6.10 m) from CL of Crane
Max. Vertical Lift:	21'6" (6.55 m) (from crane base)
Boom Elevation:	-5° to +80°
Winch Specification:	
Rope Diameter:	5/16" (.794 cm)
Line Pull Speed:	25 ft/min (7.62 m)
Max. Single Part Line:	2000 lbs (905 kg)
Max. Double Part Line:	4000 lbs (1815 kg)
Rotation:	370° power (worm gear)
Lifting Capacities:	1600 lbs @ 10' (725 kg @ 3.05 m) 1050 lbs @ 15' (475 kg @ 4.57 m) 800 lbs @ 20' (365 kg @ 6.10 m)
Power Supply Req:	12-volt power unit (2.0 gpm @ 2600 psi) (7.57 lpm @ 179 bars)
Controls:	20 (6.10 m) foot cord with hand held control for all functions.
Stowed Height:	33.50" (85.1 cm) (crane only)
Mounting Space Req:	18" x 15" (45.7 x 38.1 cm)
Shipping Weight:	1050 lbs. (475 kg)



280 West Third Street
P.O. Box 169
Gamer, IA 50438
Telephone: 800-321-3741
Fax: 641-923-2812
Internet: www.mechanictruck.com
email: sales@mechanictruck.com

Designed & Manufactured in the U.S.A.
*Specifications may change without notification.
Copyright © 2003 Stellar Industries, Inc.