

# DUS AIR COMPRESSOR



# BOSS

## DUS

- Separate Engine/Compressor
- Remote Fluid Drains
- Two-Stage Air Filters with Restriction Indicator
- Oil and Air Pressure Gauges
- Circuit Breaker and Hourmeter
- Ammeter or Voltmeter
- Shutdown Switches for Low Engine Oil Pressure, High Coolant Temperature, and Compressor Discharge Temperature
- Two 3/4" Discharge Valves

## OPTIONS

- SAE B Flange Auxiliary Drive
- Front Mount Engine Pulley
- 120 AMP Alternator
- 6.2kW Generator
- Lifting Bail
- Aftercoolers
- OSHA Valves
- Lubricators
- Natural Gas Engines

*\*Call Factory to Determine Proper Options for Each Model*

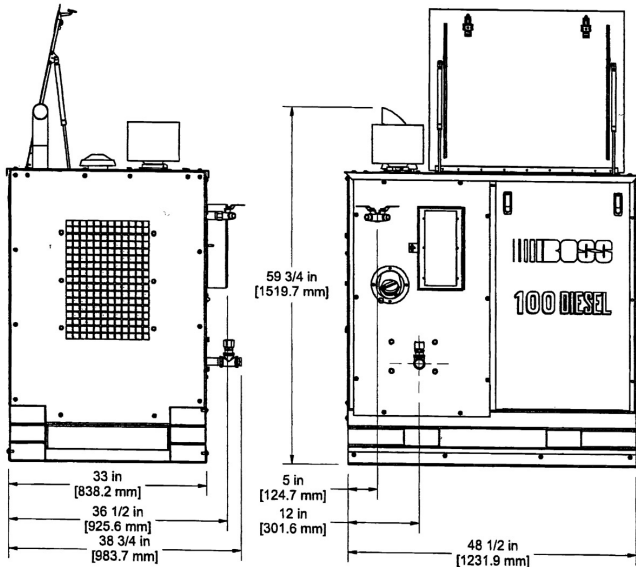
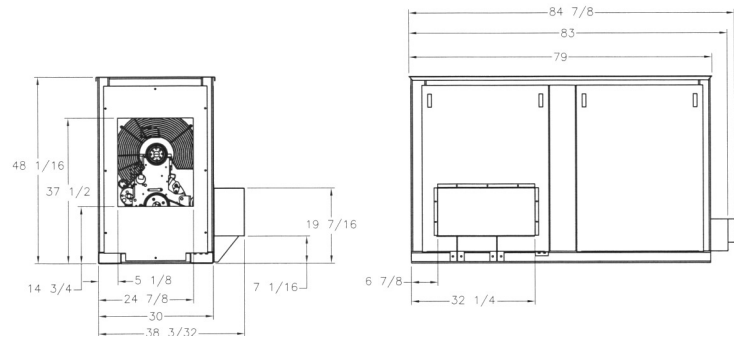
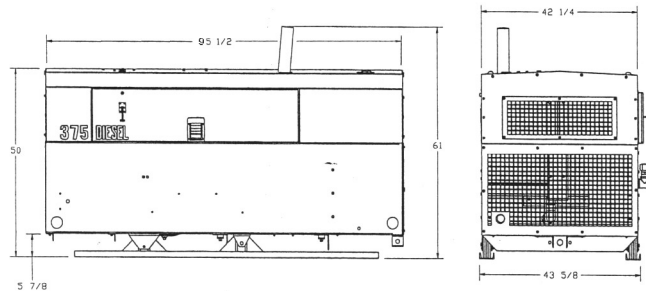
**BIG ENOUGH TO HANDLE THE TOUGHEST JOBS...**

***SMALL ENOUGH TO BE VERSATILE AND LIGHT WEIGHT!***

# BOSS

*The  
Difference is  
Revolutionary™*

# SPECIFICATIONS


**100 - 150 DUS**

**210 - 200 - 250 DUS**

**300 - 375 DUS**

MODEL	100 or 150 DUS	210 DUS	200/200 DUS	250 DUS	300/200 DUS	375 DUS
Capacity	150 CFM, 4.3 M3	210 CFM, 6.0 M3	200 CFM, 5.7 M3	250 CFM, 7.1 M3	300 CFM, 8.5 M3	375 CFM, 10.6 M3
Operating Pressure	125 PSI, 8.6 Bar	150 PSI, 10 Bar	200 PSI, 14 Bar	125 PSI, 8.6 Bar	220 PSI, 15 Bar	150 PSI, 10 Bar
Engine Model	Deere 4024 T	Deere 4045	Deere 4045	Deere 4024 T**	Deere 4045 T	Deere 4045 T
Engine Horsepower	60 Hp, 36.5 kW	60 Hp, 45 kW	80 Hp, 60 kW	66 Hp, 49kW	125 Hp, 93 kW	125 Hp, 93 kW
Engine RPM @ Rated CFM	2200	2500	2500	2800	2500	2500
Engine Idle RPM	1500	1500	1500	1600	1800	1800
Engine Electrical System	12 Volt	12 Volt	12 Volt	12 Volt	12 Volt	12 Volt
Air End Bearings	Double Roller	Double Roller	Double Roller	Double Roller	Double Roller	Double Roller
Base Dimensions* L x W x H, Inches	49 x 33 x 60	80 x 30 x 60	80 x 30 x 60	80 x 30 x 60	96 x 44 x 60	96 x 44 x 60
Fuel Tank Availability	Standard	Optional	Optional	Optional	Standard	Standard
Fuel Tank Capacity	20 Gal., 76 L	26 Gal., 98 L	26 Gal., 98 L	26 Gal., 98 L	50 Gal., 189 L	50 Gal., 189 L

\* Dimensions may vary depending on configuration of Optional Equipment.

\*\* Requires Deere 4045 Engine if ordering Optional Auxiliary Drive.